

Treadmill

XFIT C.L.6200

User's Manual



* Product specifications may differ from the photo and are subject to change without notice.

CONTENTS

INTRODUCTION / IMPORTANT INFORMATION	4
PACKING LIST	6
ASSEMBLY INSTRUCTIONS	7
EXPLODED VIEW	15
PART LIST	16
HOW TO USE THE CONSOLE	17
CONTENTS	18
CONSOLE FUNCTIONS DESCRIPTION & PROGRAMS	19
CONSOLE TROUBLESHOOTING	31
WARM UP / COOL DOWN	32
CLEANING & MAINTENANCE	33
WARRANTY	34

INTRODUCTION / IMPORTANT INFORMATION

A. Introduction

This user manual contains assembly, operation, maintenance and safety information. Please read and retain this manual for future reference.

B. Safety guidelines

1. Read the user manual and all accompanying literature. Follow it carefully before using your machine.
2. This machine is intended for indoor home or commercial location use only.
3. Inspect your exercise machine prior to exercising to ensure that all parts are tightened.
4. Make sure the trainer is stable on the floor. Avoid uneven surfaces.
5. Keep children under age of 14 and pets away from the exercise trainer at all times.
6. Exercise equipment has moving parts. Keep others, especially children, at a safe distance while exercise.
7. Make sure all devices are fully adjusted before use to avoid injury.
8. Remove all jewelry, including rings, chains and pins before exercising.
9. Always wear suitable clothing and footwear during exercise. Do not wear loose fitting clothing that could become caught in the moving parts of your exercise machine.
10. Warm up 5 to 10 minutes before each workout and cool down 5 to 10 minutes afterward. This allows your heart rate to gradually increase and decrease and will help prevent muscle strain.
11. Never hold your breath while exercising. You should breathe at a normal rate in conjunction with the level of exercise being performed.
12. Rest adequately between workouts. Muscles tone and develop during these rest periods.

THE WARRANTY IS NOT VALID IF: The machine is placed outdoors or exposed to sun and dust.

CAUTION! The company does not have no responsibility for causing damage due to misuse of the product and non-compliance with the instructions for use.

IMPORTANT:

THE MAXIMUM RECOMMENDED WEIGHT CAPACITY FOR YOUR EQUIPMENT IS 150 KGS.

WARNING:

Before commencing with any exercise program, please consult your family physician. If at any time during exercise you feel faint, dizzy or experience pain, stop and consult your family physician.

The safety level of the equipment can be maintained only if it is examined regularly for damaged and wear.

The appliances are not for children under age of 14.

IMPORTANT:

Read all instructions carefully. Assemble the unit in accordance with the steps in the manual. Lay out all parts on the floor and check if you have all the parts included completely before beginning assembly. In case of a discrepancy, please contact the customer service department.

SPECIFICATIONS	
Resistance	Aero-magnetic
Resistance control	Electronic
Console Indications	Speed, Time, Distance, Calories, Watts, Pulse, Programs, RPM, 4 Users, Fat Burner, Interval Training, H.R.C., Watt Control, Recovery, Body Fat Calculation.
Machine weight	85 kg
Maximum user weight	150 kg

PACKAGING PARTS LIST



A



B



E1R



E1L



F1R



F1L



G1



F3L



F3R



E6



F10



E2 (2)
ΠΑΞΙΜΑΔΙ
1/2"



E4 (2)
ΡΟΔΕΛΑ
1/2"*2T*28



D10 (2)
ΡΟΔΕΛΑ
M8*2T*20



F6(8)
ΡΟΔΕΛΑ
M6*1.5T*16



F9 (2)
ΜΠΟΥΛΟΝΙ
M8*12mm



A6 (2)
ΜΠΟΥΛΟΝΙ
M10*16mm



A7 (4)
ΜΠΟΥΛΟΝΙ
M10*65mm



F7 (8)
ΜΠΟΥΛΟΝΙ
M6*40mm



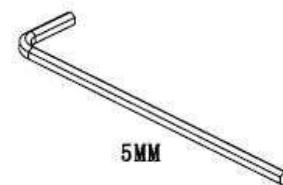
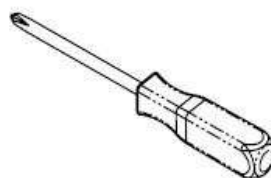
D16 (2)
ΜΠΟΥΛΟΝΙ
M8*50mm



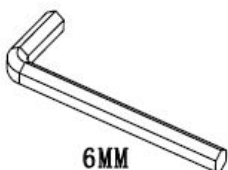
D17 (2)
ΠΑΞΙΜΑΔΙ
M8



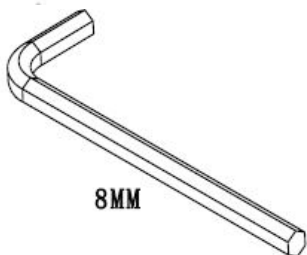
D14 (2)
ΠΩΜΑ



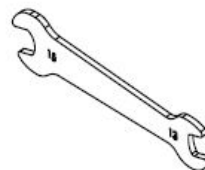
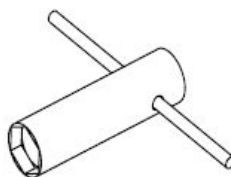
5MM



6MM



8MM

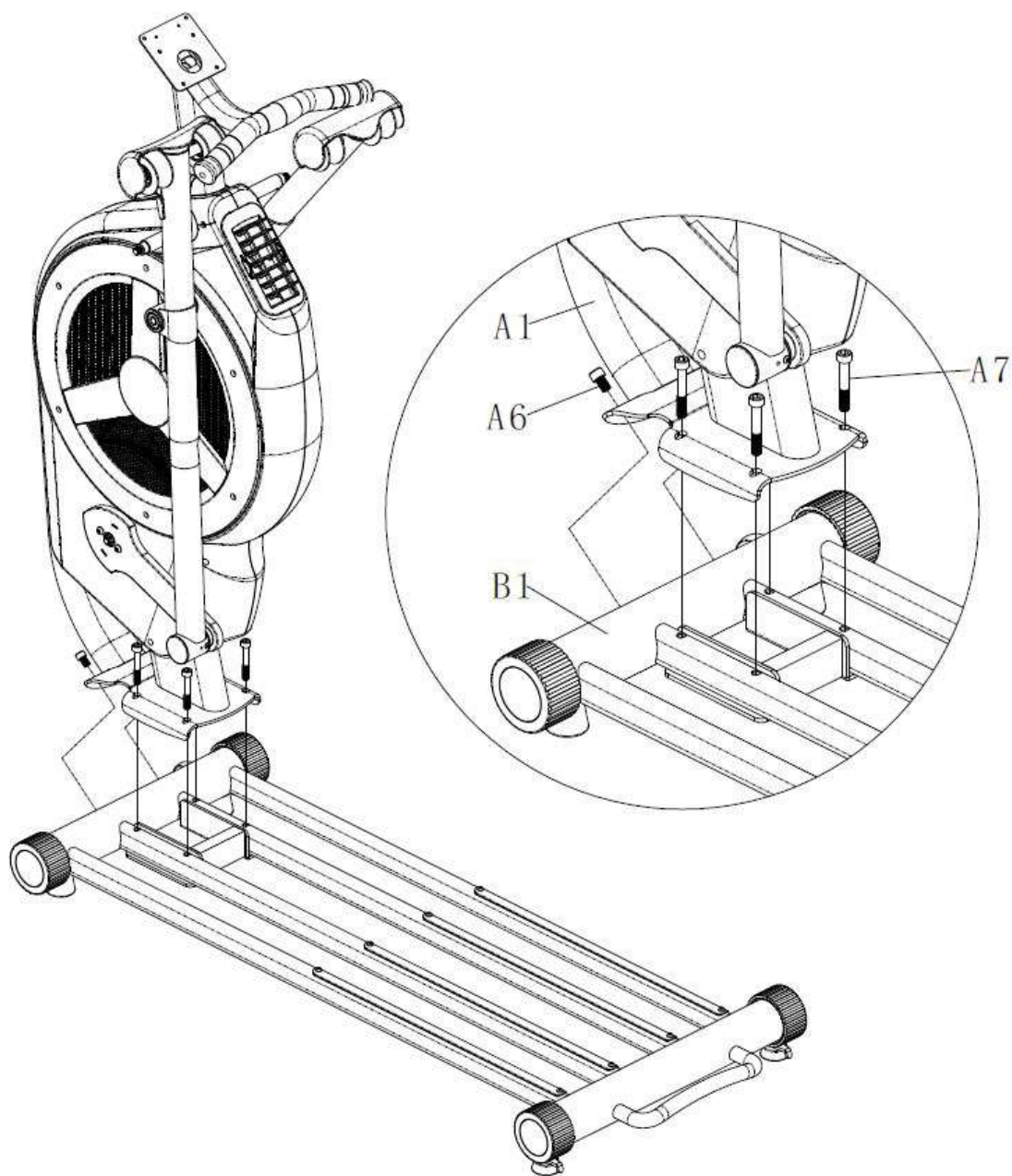


ASSEMBLY INSTRUCTIONS

Note: Assembly requires 2 people.

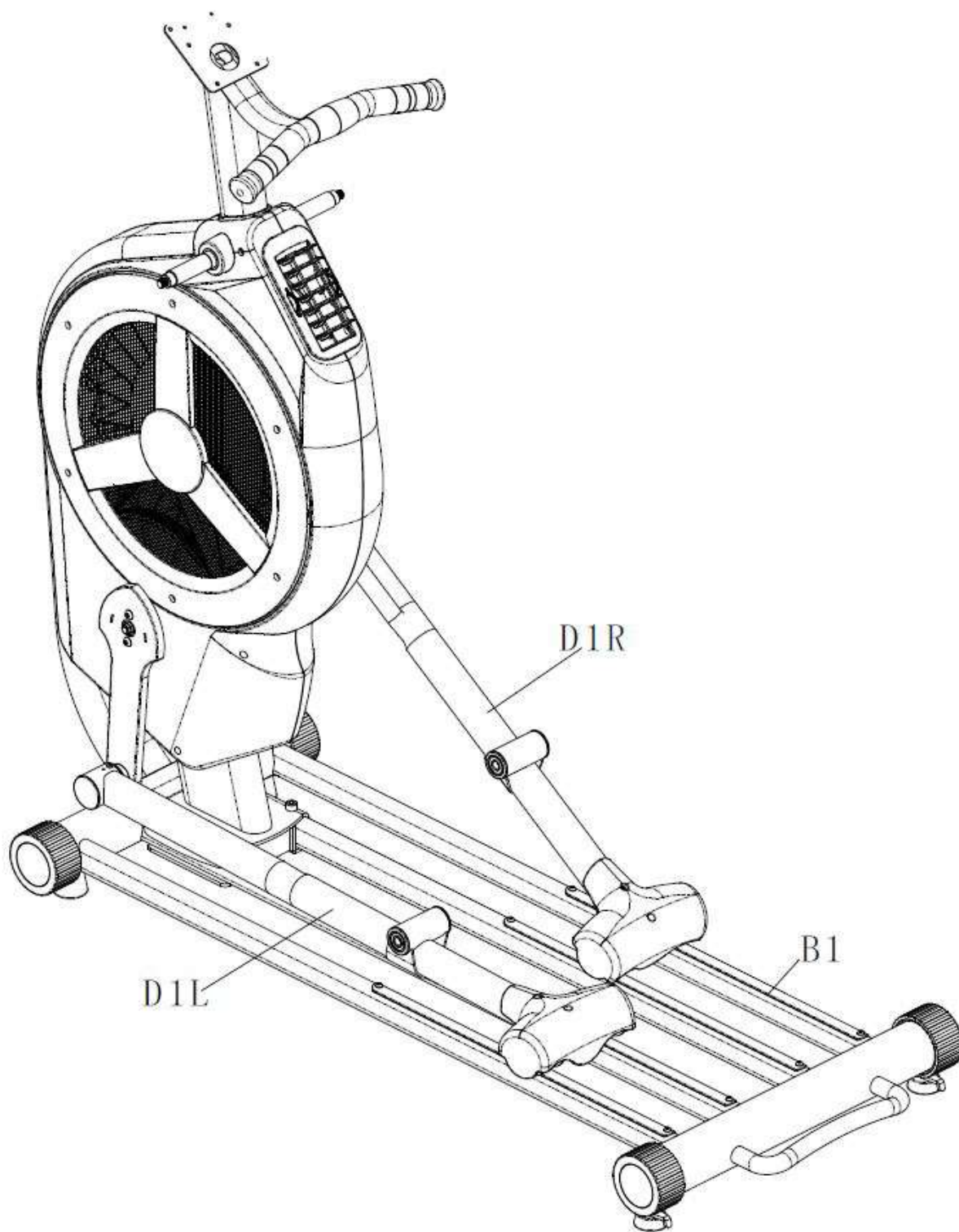
STEP 1:

Attach the **MAIN FRAME (A1)** to the **GUIDE RAIL SET (B1)** using two **SCREWS (A6)** and four **SCREWS (A7)**.



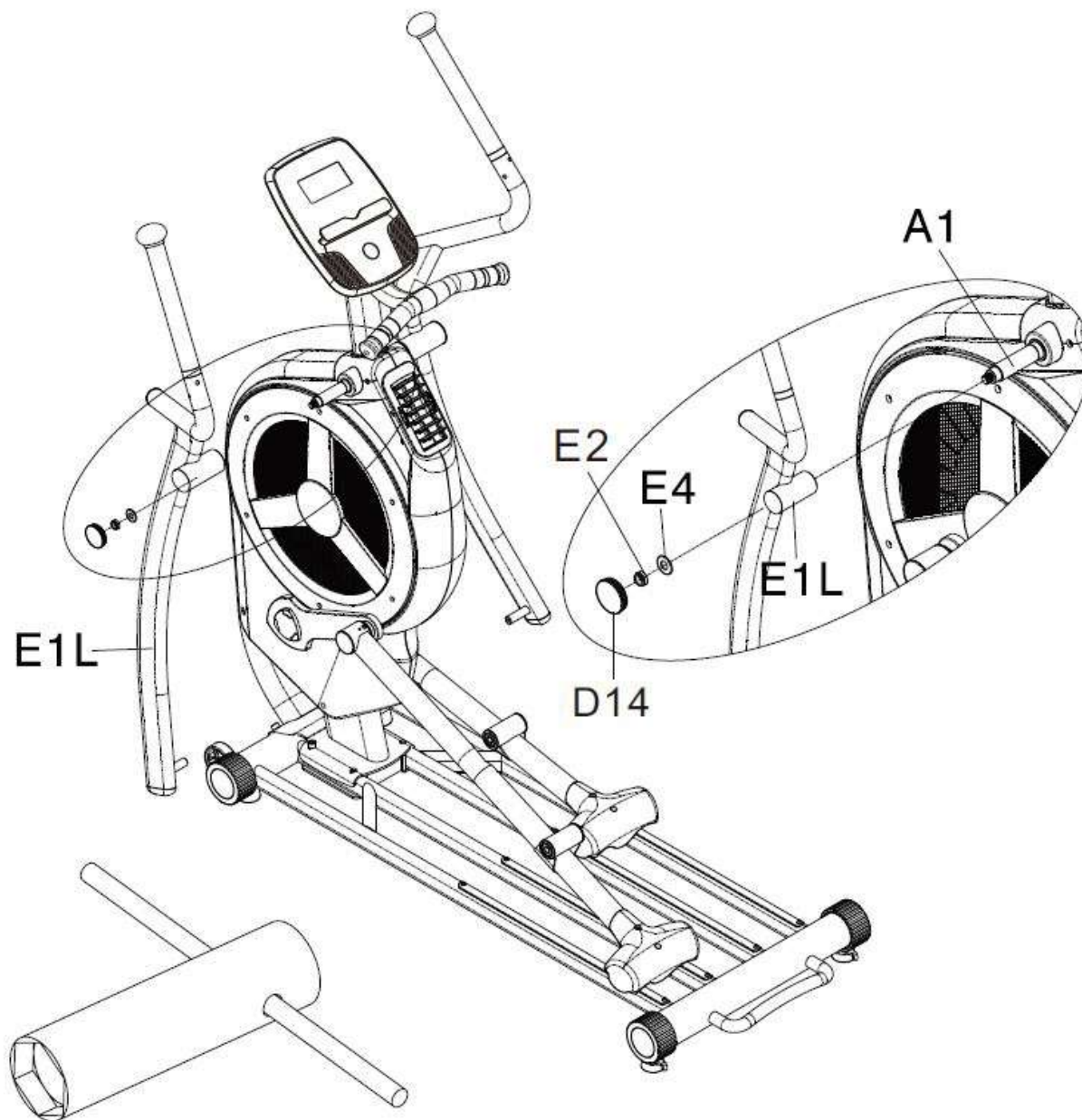
STEP 2:

Remove the ties from both **PEDALS (D1L & D1R)** and place them on top of the **GUIDE RAIL SET (B1)**.



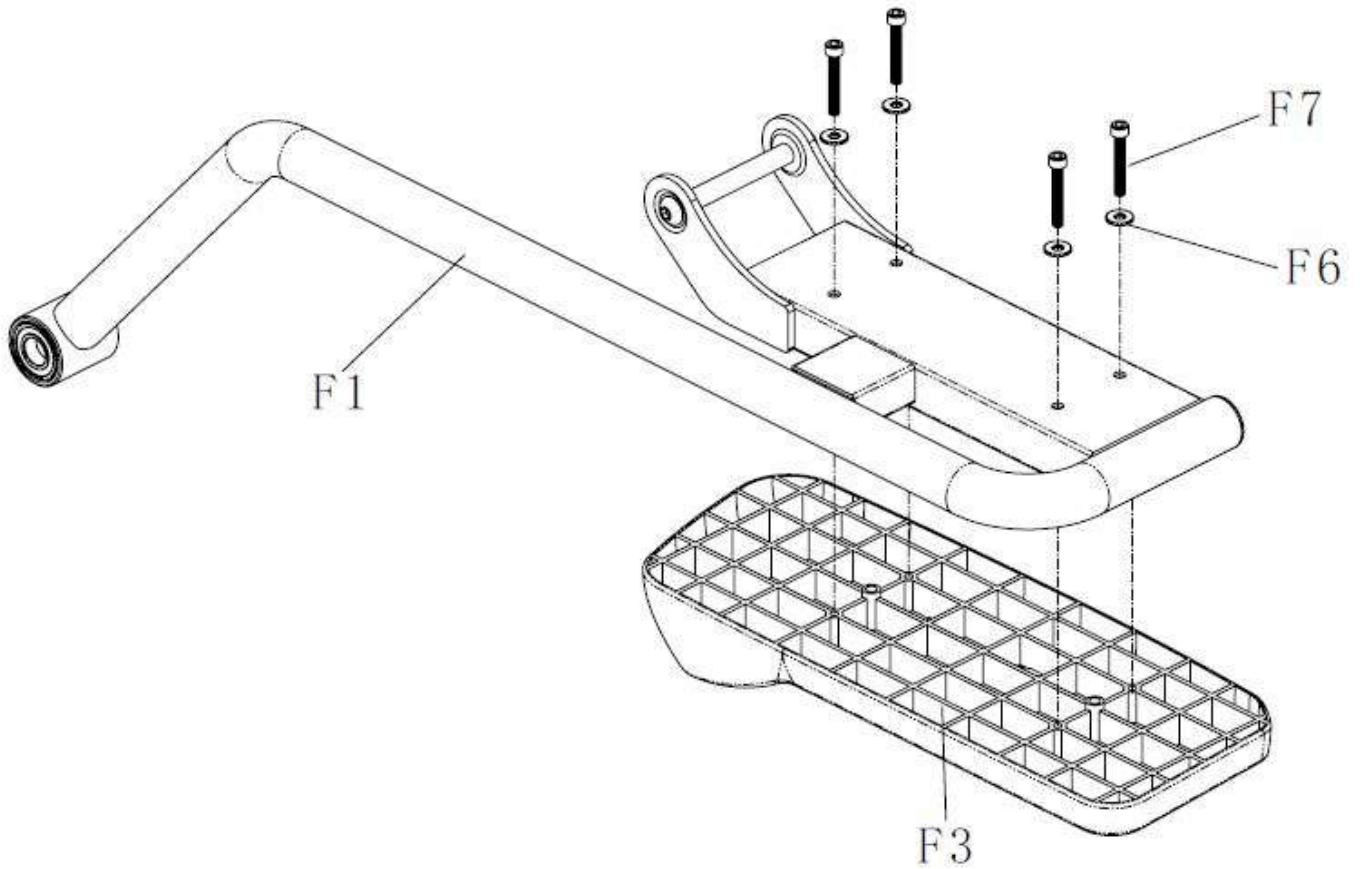
Step 3:

1. Attach the **LEFT HANDLEBAR (E1L)** to the **MAIN FRAME (A1)** using a **WASHER (E4)**, a **NUT (E2)** and a **PLUG (D14)**.
2. Repeat the above steps for the other side.



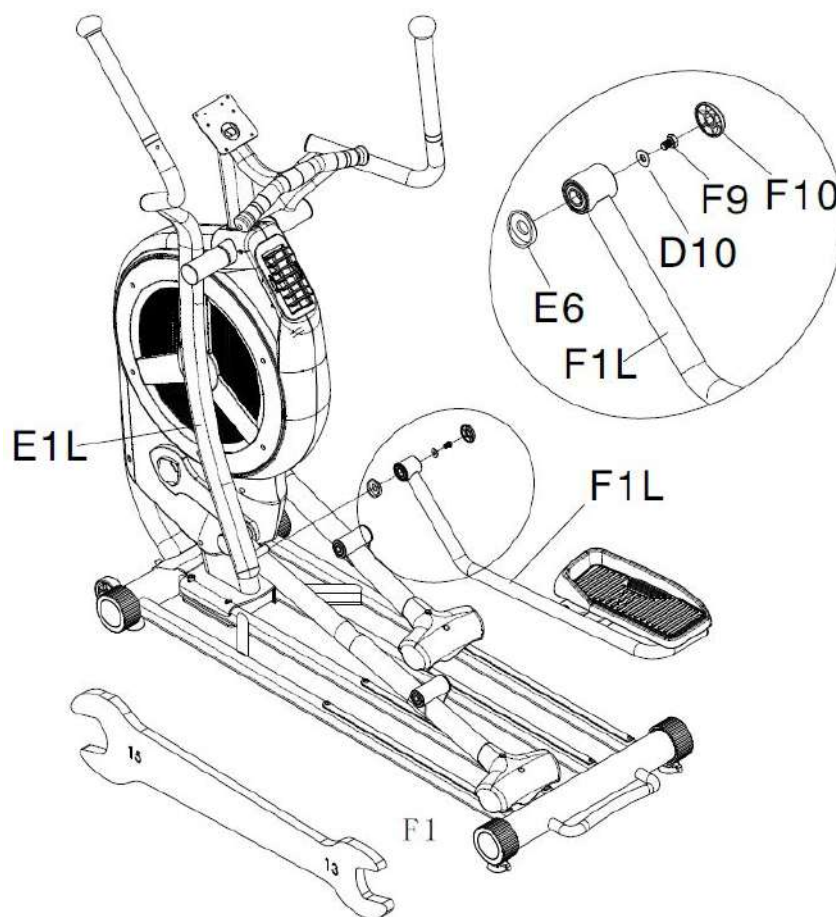
STEP 4 :

1. Attach the **PEDAL (F3)** to the **PEDAL FIXED ASSEMBLY (F1)** using four **WASHERS (F6)** and four **SCREWS (F7)**.
2. Repeat the above step for the other side.



STEP 5:

1. Place the **SPACER SLEEVE (E6)** into the **LEFT HANDLEBAR (E1L)**.
2. Attach the **LEFT PEDAL FIXED ASSEMBLY (F1L)** to the **LEFT HANDLEBAR (E1L)** using a **WASHER (D10)**, a **SCREW (F9)** and a **BUSHING (F10)**.
3. Repeat the above steps for the other side.

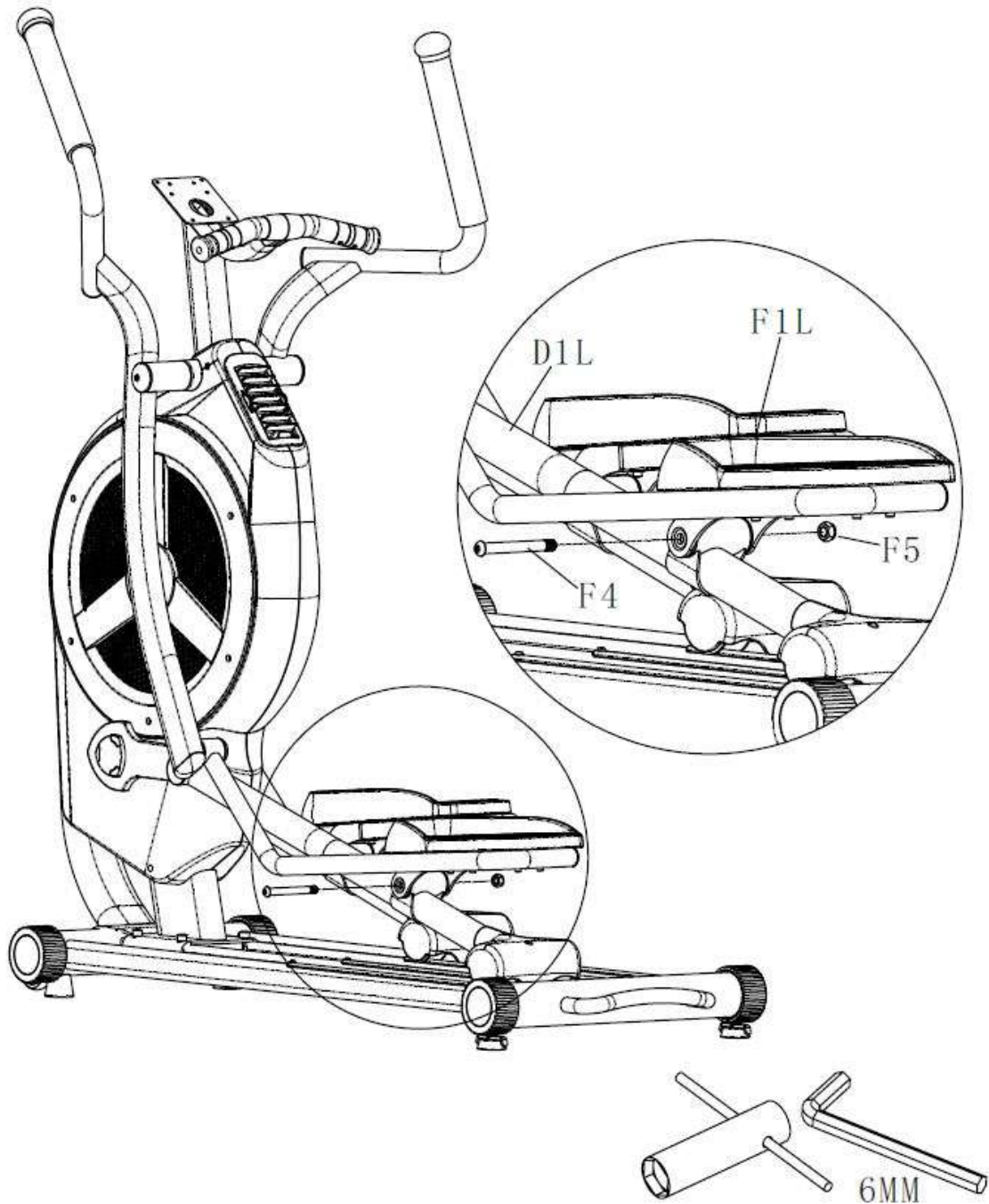


Check and tighten the screws at regular intervals, as they may loosen due to vibrations. Damage that may be caused by a lack of maintenance is not covered by the warranty.

CAUTION! During exercise, heavy sweating can cause mechanical and electrical damage to the machine. Like any other liquid substance, sweat can cause damage mainly to the electrical parts of the machine (dial, cables, etc.). The best solution is to use a towel during exercise and wipe the machine after each use to avoid any unwanted damage.

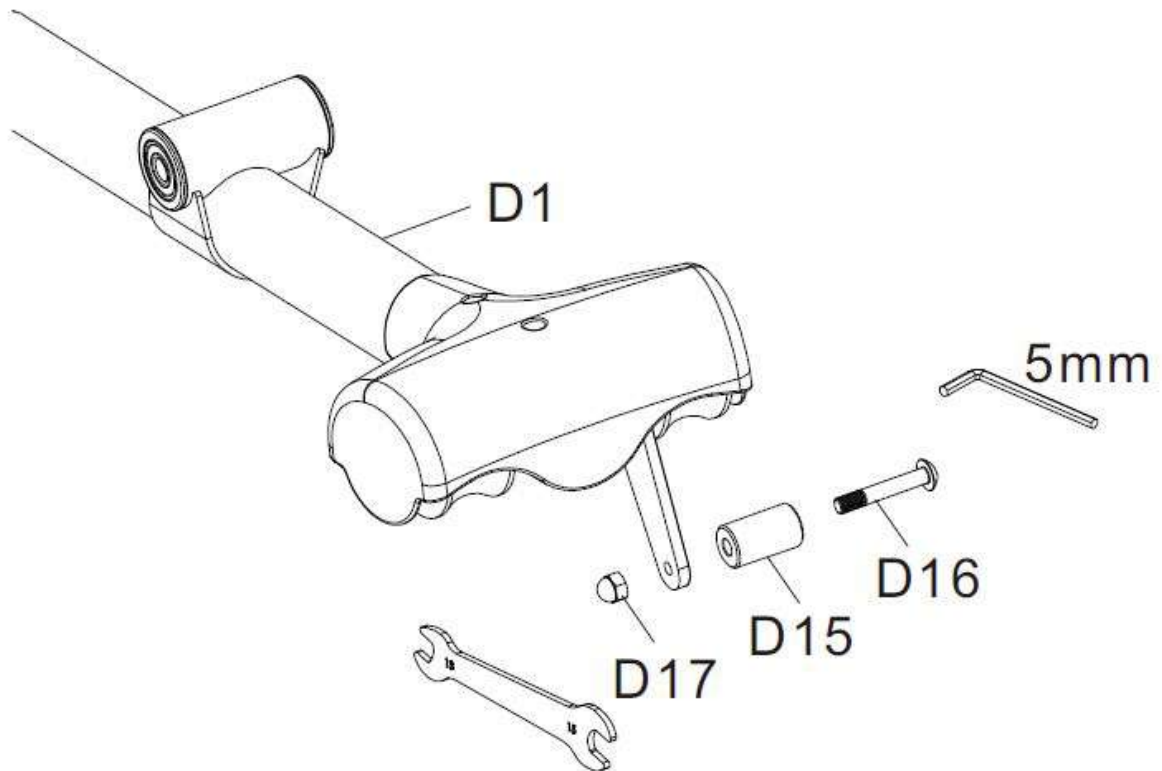
STEP 6:

1. Remove pre-installed parts, **ALLEN BOLT (F4)** and the **NUT (F5)**, from the **LEFT PEDAL FIXED ASSEMBLY (F1L)**.
2. Attach the **LEFT PEDAL FIXED ASSEMBLY (F1L)** to the **LEFT PEDAL ARM ASSEMBLY (D1L)** using the **ALLEN BOLT (F4)** and the **NUT (F5)** removed earlier.
3. Repeat the above steps for the other side.



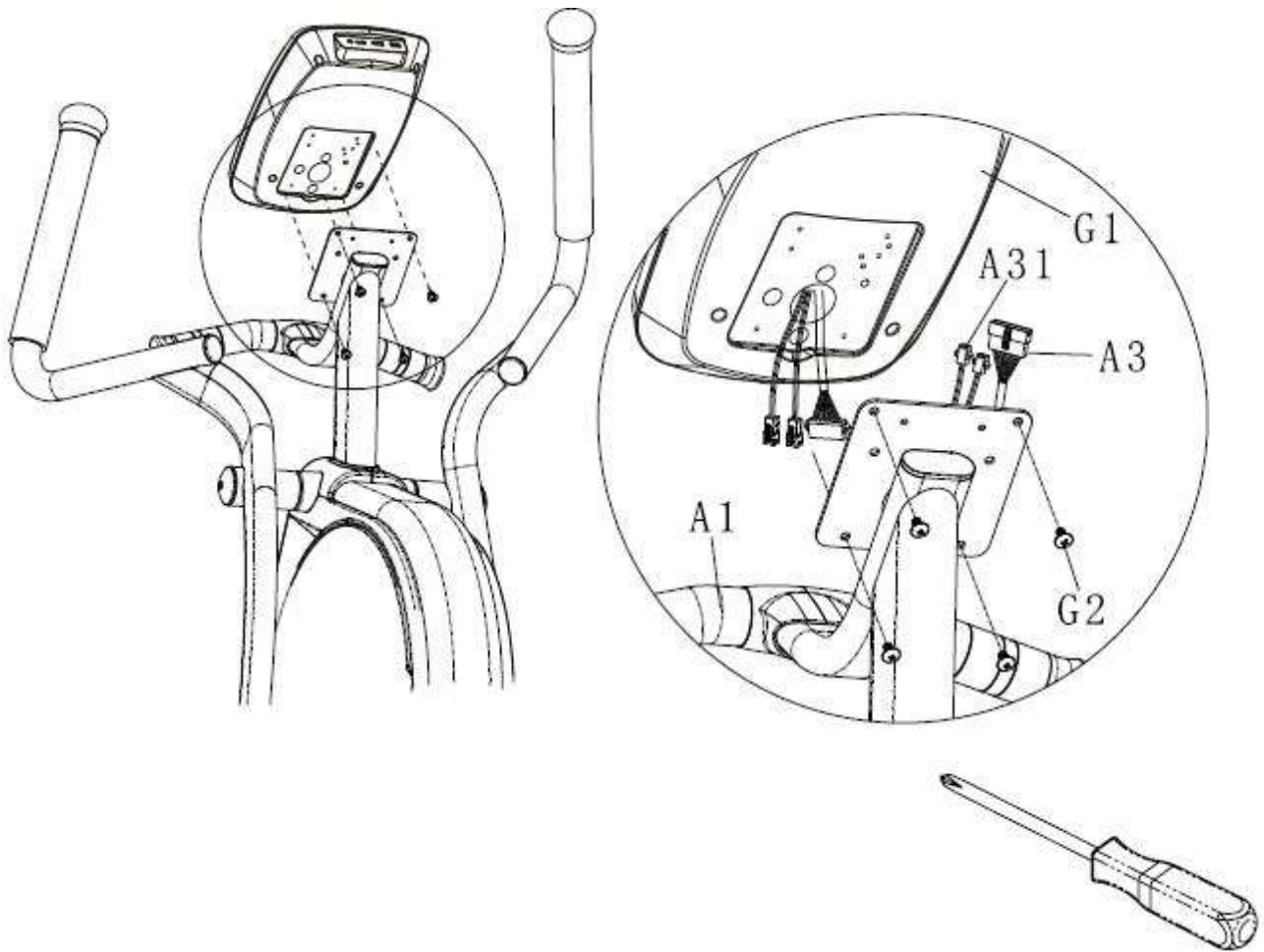
STEP 7:

1. Attach the **ANTI-DERAILMENT WHEEL (D15)** to the **PEDAL ARM ASSEMBLY (D1)** using **1 NUT (D17)** and **1 BOLT (D16)**.
2. Repeat the above step on the other side.

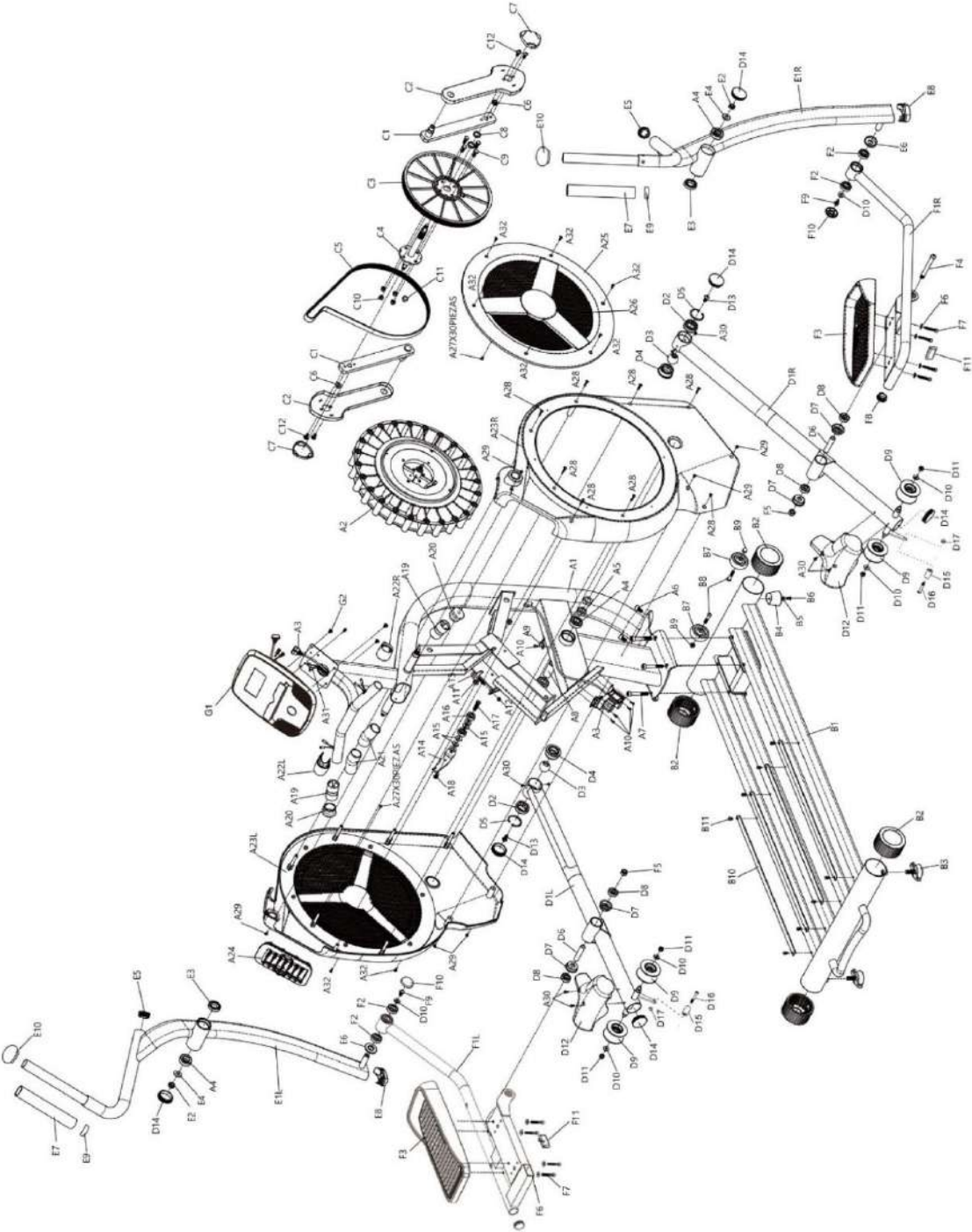


STEP 8:

1. Remove four **SCREWS (G2)** from the back of the **MONITOR (G1)**.
2. Connect two **WIRES (A3 & A31)** to the **MONITOR (G1)**.
3. Attach the **MONITOR (G1)** to the **MAIN FRAME (A1)** using four **SCREWS (G2)** removed earlier.



EXPLODED VIEW



PART LIST

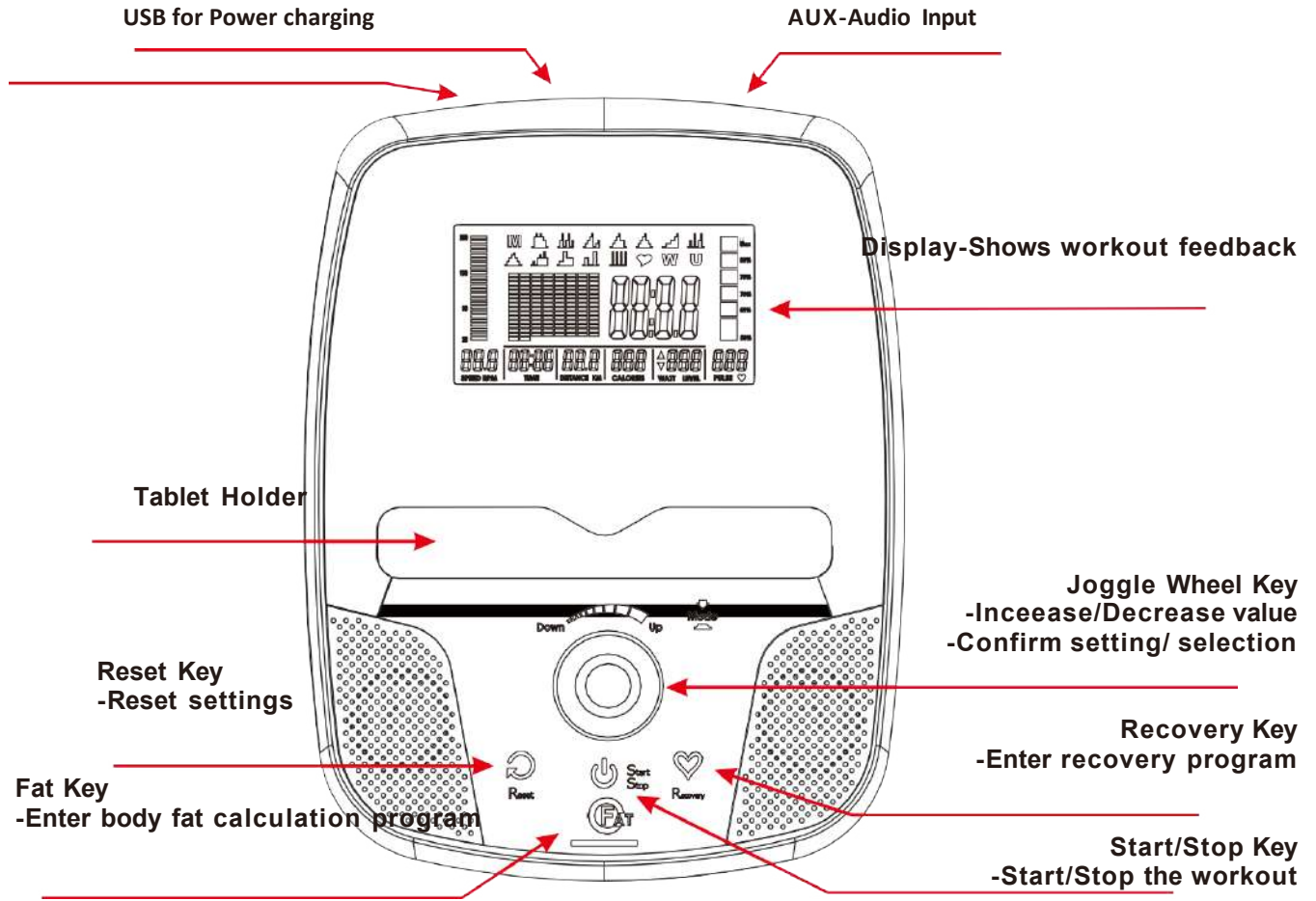
No.	Description	Qty	No.	Description	Qty
A1	Main frame	1	C7	Tri-crank cover	2
A2	Fan wheel assembly Φ450	1	C8	Spacer Φ24×Φ20.4×5mm	2
A3	Tension motor	1	C9	Allen bolt M8×20mm	4
A4	Ball bearing 6004ZZ	4	C10	Nut M8	4
A5	Nut 6-5T	2	C11	MagnetΦ15×7	1
A6	Allen bolt M10×16mm	2	C12	Allen bolt M6×10mm	4
A7	Allen bolt M10×65mm	4	D1R	Pedal arm assembly (R)	1
A8	Spacer Φ25.1×Φ21.1×58.5mm	1	D1L	Pedal arm assembly (L)	1
A9	Sensor fixing base	1	D2	Ball sleeve Without flange	2
A10	Self-tap screw M4×12mm	5	D3	Universal ball head	2
A11	Nut 3-26×6T	2	D4	Ball sleeve With flange	2
A12	Nut M8	1	D5	C-clip C type R45	2
A13	Allen bolt M8*40mm	1	D6	Spacer Φ15×Φ12.35×67mm	2
A14	Idle frame 6T	1	D7	Bearing sleeve	4
A15	Flat washer Φ10×Φ23×2T	4	D8	Ball Bearing 6201ZZ	4
A16	Ball bearing 6200ZZ	2	D9	PU wheel	4
A17	Flat screw M10×40mm	1	D10	Flat washer M8×Φ20×2T	6
A18	Flat screw M8X16mm	1	D11	Nut M8	4
A19	Hand pulse set	2	D12	PU roller cover	2
A20	Cap Φ31.75	2	D13	Allen bolt M8*20mm	2
A21	Foam grip Φ31.75×3T	2	D14	Plug 2"	2
A22R	Handle trimming cover (R)	1	D15	Anti-derailment wheel	2
A22L	Handle trimming cover (L)	1	D16	Bolt M8*50mm	2
A23R	Fan cover (R)	1	D17	Nut M8	2
A23L	Fan cover (L)	1	E1R	Hand rail (R)	1
A24	Fan outlet	1	E1L	Hand rail (L)	1
A25	Fan disk	2	E2	Nut 4-20UNF 8T	2
A26	Stretch net	6	E3	Ball bearing 6905ZZ	2
A27	Self-tap screw M4×8mm	30	E4	Flat washer 4×2.0T×Φ28	2
A28	Self-tap screw M4×12mm	8	E5	Flat cap Φ38	2
A29	Self-tap Philips screw M4×25mm	6	E6	Spacer sleeve	2
A30	Self-tap Philips screw M4×10mm	8	E7	Foam grip Φ31.75 pipe use	2
A31	Hand pulse wire	2	E8	Cap 30×70	2
A32	Philips screw M4.8*10mm	12	E9	Aluminum ring Φ38*32*14	2
B1	Guide rail set	1	E10	Cap	2
B2	End cap	4	F1R	Pedal fixed assembly (R)	1
B3	Adjustable pad Φ50 M12+ nut	2	F1L	Pedal fixed assembly (L)	1
B4	Fixed foot pad Φ76.2 pipe use	2	F2	Ball bearing 6003ZZ	4
B5	Flat washer M6×Φ19×2T	2	F3R	Pedal (R)	1
B6	Self-tap screw M5×16mm	2	F3L	Pedal (L)	1
B7	Moving wheel Φ76	2	F4	Allen bolt M12×109mm	2
B8	Allen bolt M8×40mm	2	F5	Nut M12×P1.25	2
B9	Dome nut M8	2	F6	Flat washer M6×Φ16×1.5T	8
B10	Aluminum rail trimming	4	F7	Allen bolt M6×40mm	8
B11	Allen bolt M6×10mm	8	F8	Cap Φ31.75	2
C1	Crank set	2	F9	Hex. bolt M8×12mm	2
C2	Crank cover	2	F10	Bushing Φ42	2
C3	Belt pulley Φ310	1	F11	Flat cap	2
C4	Shaft	1	G1	Console	1
C5	Belt 498J8	1	G2	Philips screw (With monitor)	4
C6	Nut for shaft M10	2			

CONSOLE INSTRUCTIONS

INDEX

CONSOLE DESCRIPTION	19
KEY DESCRIPTION	19
DISPLAY DESCRIPTION	20
OPERATION PROCEDURE	
POWER ON	21
USER PROFILE SETTING	21
QUICK START	21
PROGRAMS	
PROGRAM SELECTION	22
MANUAL MODE	22
PRE-SET PROFILE PROGRAMS	23
CALORIE PROGRAMS	23
INTERVAL TRAINING PROGRAMS	24
H.R.C. PROGRAMS	25
USER PROFILE PROGRAM	25
WATT CONTROL PROGRAM	26
RECOVERY PROGRAM	27
BODY FAT CALCULATION PROGRAM	28
ADDITIONAL INFORMATION	
USB CHARGING	28
SPEAKERS	28
REMARKS	28
PROFILES	
PRE-SET PROFILE PROGRAM PROFILES	29
CALORIE PROGRAM PROFILES	29
INTERVAL TRAINING PROGRAM PROFILES	29
WATT CONTROL PROGRAM PROFILE)	29
TROUBLESHOOTING	
ΑΝΤΙΜΕΤΩΠΙΣΗ ΠΡΟΒΛΗΜΑΤΩΝ ΚΟΝΣΟΛΑΣ	30

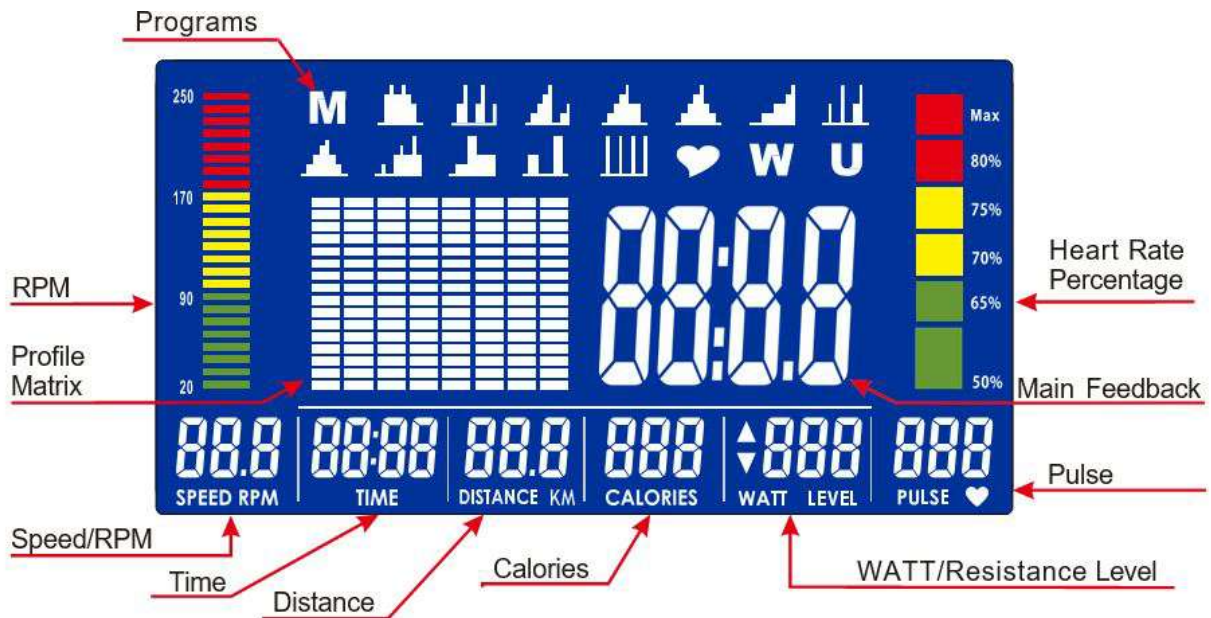
CONSOLE DESCRIPTION



KEY DESCRIPTION

KEY	FUNCTION
Joggle Wheel Key Up/Down function (Rotate the key)	<ul style="list-style-type: none"> • Browse through programs. • Increase/Decrease the resistance level during workouts. • Change the input values in settings.
Joggle Wheel Key Enter function (Press the key)	<ul style="list-style-type: none"> • Enter the selected program. • Enter the input values in settings. • Change display type during workouts.
Start/Stop Key	Start/Stop a workout.
Reset Key	<ul style="list-style-type: none"> • Return to the main menu when the workout is stopped. • Reboot the console by pressing it down for 2 seconds.
Recovery	Enter heart rate recovery program.
Fat Key	Enter fat calculation program.

DISPLAY DESCRIPTION



+

DISPLAY	DESCRIPTION
SPEED	An estimation of kilometers per hour
RPM	An estimation of rounds per minute
TIME	The time elapsed or the time remaining in your workout
DISTANCE	The total distance travelled since the start of the workout or the distance remaining in your workout
CALORIES	The calories burned since the beginning of the workout
WATT	A measurement of workload; one watt equals to 6 kilogram- meters per minute
RESISTANCE LEVEL	The current resistance level
PULSE	Feedback of your current heart rate during the workout
PROGRAMS	Consists of a number of programs including manual, profile training, calorie programs, interval trainings, heart rate controls, watts controls, fat calculation program and user programs.

OPERATION PROCEDURE

POWER ON

1. Plug in the adapter, console turns on and display all segments on the display for 2 seconds (Dia.1).
2. Display preset wheel diameter for 1 second (Dia.2) and reset the resistance to LOAD=1.
3. After the trainer lays idle for 4 minutes, the console switches to power saving mode. When the console detects pedaling, pulse or key inputs again, the screen illuminates.



DIA.1



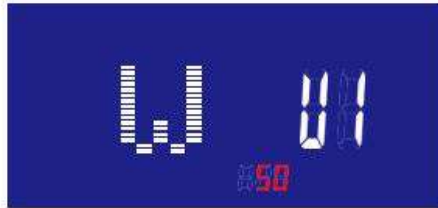
Dia.2

USER PROFILE SETTING

After the console is turned on, set your GENDER, AGE, HEIGHT and WEIGHT (Dia.4) by selecting one of the user profile from U1 to U4 (Dia.3), and use the MODE key to confirm. After the setting is complete, the console goes to the main menu (Dia.5).



Dia.3



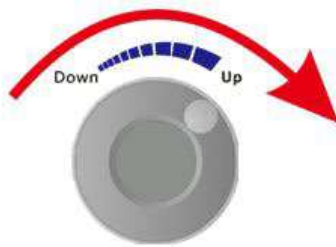
Dia.4



Dia.5

QUICK START

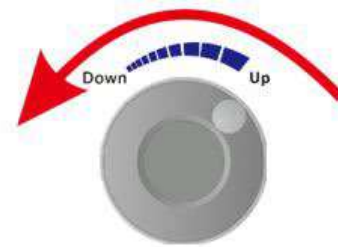
Press the START key to begin your workout. Rotate clockwise to increase the resistance or counter-clockwise to decrease the resistance.



Increase resistance



Level 16



Decrease resistance



Level 1

PROGRAMS

PROGRAM SELECTION

In the main menu, rotate the UP/DOWN key to select a program and press the MODE key to confirm:

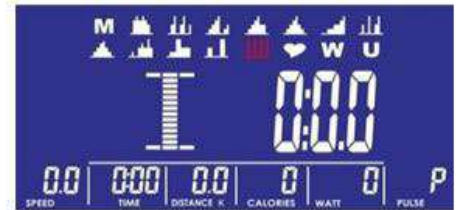
M(Manual) (Dia.5) → Pre-set Profile Program (Program 1-10) (Dia.6) → Calorie Programs (Dia.7) → Interval Training Programs(Dia.8) → H.R.C (Dia.9) → WATT Control (Dia.10) → User Profile Program (Dia.11).



Dia.6



Dia.7



Dia.8



Dia.9



Dia.10



Dia.11

MANUAL MODE

Note!! Press the START key in the main menu to start your workout in manual mode.

1. In the main menu, rotate the UP/DOWN key to select manual mode and press the MODE key to enter.
2. Rotate the UP/DOWN key to adjust the load level (Dia.12), and it cycles through all parameters every 3 seconds if no inputs are detected during the setting.
3. Rotate the UP/DOWN key to set TIME (Dia.13), DISTANCE (Dia.14), CALORIES (Dia.15), PULSE (Dia.16) and press the MODE key to confirm.
4. Press the START/STOP key to start your workout (Dia.17). During the workout, you can adjust the load level by rotating the UP/DOWN key.
5. To return to the main menu, press the START/STOP key to pause a workout, and press the RESET key.



Dia.12



Dia.13



Dia.14



Dia.15



Dia.16

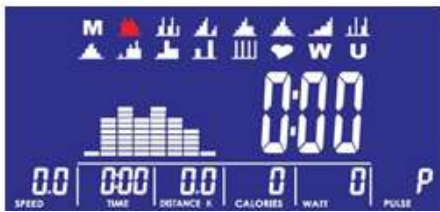


Dia.17

PRE-SET PROFILE PROGRAMS

1. In the main menu, rotate the UP/DOWN key to select a program from P01~P10 and press the MODE key to enter (Dia.18).
2. Rotate the UP/DOWN key to set the load level (Dia.19) and press the MODE key to confirm.
3. Rotate the UP/DOWN key to set TIME (Dia.20) and press the MODE key to confirm.
4. Press the START/STOP key to start your workout, and the user can adjust the load level using the UP/DOWN key.
5. To return to the main menu, press the START/STOP key to pause a workout, and press the RESET key.

Note!! For pre-set program profiles, please refer to “NOTE2” on page 28.



Dia.18



Dia.19



Dia.20

CALORIE PROGRAMS

1. In the main menu, rotate the UP/DOWN key to select calorie program and press the MODE key to enter.
2. Rotate the UP/Down key to select a calorie goal from C1 to C3 (300Cal,600Cal or 900Cal), and press the MODE key to enter (Dia.21~22).
3. Press the START key to start your workout. When you finish the first column calorie goal, it skips to the next column (each line represents 10 calories). The load level adjusts automatically based on the current RPM/CAL.
4. To return to the main menu, press the START/STOP key to pause a workout, and press the RESET key.

Note!! For calorie program profiles, please refer to “NOTE2” on page 29.



Dia. 21



Dia. 22

INTERVAL TRAINING PROGRAMS

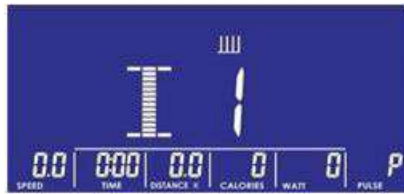
1. In the main menu, rotate the UP/DOWN key to select Interval training program and press the MODE key to enter.
2. Rotate the UP/DOWN key to select an interval training from I1 to I3 (Dia.23), and press the MODE key to enter (Dia. 24).
3. Rotate the UP/DOWN key to set a target TIME (Dia.24 shows I1 setting).
4. Press the START key to start your workout. The initial 3 minutes count down is for warm up, and the interval training begins after the warm up ends.

EX: After the 3 minutes warm up ends in I1, a 20 seconds high intensity workout begins.

Then, a 10 seconds rest session follows. During each segment, the console provides a final 2 seconds "BEEP" sound before a resistance level change. Workout segment cycle stops until the target time has been reached, or a user stops the workout.

5. To return to the main menu, press the START/STOP key to pause a workout, and press the RESET key.

Note!! For interval training profiles and interval time, please refer to "NOTE3" on page 29.



Dia.23



Dia.24

WATT CONTROL PROGRAMS

1. In the main menu, rotate the UP/DOWN key to select watt control program and press the MODE key to enter (Dia.31).
2. Rotate the UP/DOWN key to select WC (WATT Constant), W1, W2 or W3, and press the MODE key to confirm (Dia.32 shows WC & Dia.35 shows W1).
3. Read this step if WATT constant is selected. Rotate the UP/DOWN key to set a WATT goal and press the MODE key to confirm (Dia.33).
4. Rotate the UP/DOWN key to set a TIME goal (Dia.34 shows WC & Dia.36 shows W1).
5. Press the START/STOP key to start your workout. During the workout, the console automatically adjusts the resistance level based on the current WATT/RPM. The workout stops until the TIME goal is reached, or a user stops the workout.
6. To return to the main menu, press the START/STOP key to pause a workout, and press the RESET key.

Note!! For WATT control profiles, please refer to "NOTE4" on page 29.



Dia.31



Dia.32



Dia.33



Dia.34



Dia.35



Dia.36

RECOVERY PROGRAM

Note!! The program can only work when the pulse is detected. Wear a chest strap or keep both hands on the handlebars to provide a pulse reading to the console.

1. While exercising for a period, press the RECOVERY key to enter RECOVERY program.
2. The console starts 60 seconds count down and begin determining how well your heart recovers to your normal heart rate from this exercise (Dia.40).
3. After the countdown is complete, the result is shown on the display varied from F1 to F6. (F1 is excellent & F6 is poor)(Drawing 41).
4. Press the RECOVERY key again to return to the main display.



Dia.40



Dia.41

1.0	OUTSTNDING
1.0<F<2.0	EXCELLENT
2.0<F<2.9	GOOD
3.0<F<3.9	FAIR
4.0<F<5.9	BELOW AVERAGE
6.0	POOR

Reference table

BODY FAT CALCULATION PROGRAM

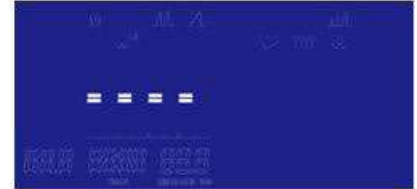
1. In STOP mode, press the FAT key to enter the body fat calculation program.
2. The display shows the current user ID for 2 seconds (Dia. 90).
3. Console starts the calculation (Dia. 91& 92), make sure both your hands are on the handlebar, so the pulse can be detected through the hand pulse sensor.
4. The display shows your body fat symbol, body fat percentage, and BMI (Dia. 93, 94, 95).
5. Press the FAT key again to resume your workout.



Dia.90



Dia.91



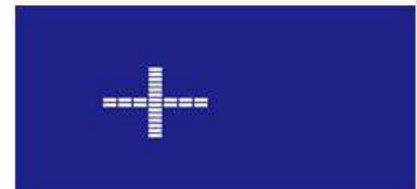
Dia.92



Dia.93



Dia.94



Dia.95

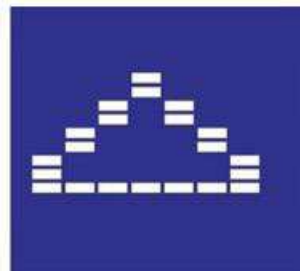
※ BODY FAT symbol reference chart:



Thin



Standard



Slight FAT



FAT

ADDITIONAL INFORMATION

USB POWER CHARGING

The USB port on the console provides USB charging for tablets and smart phones.

SPEAKERS

Users can play the music through the console's speakers with an audio-in cable.

Note!! The console does not read the memory card, and some self-generated models do not equipped with speakers.

REMARKS

1. The console requires an adaptor of 9V, 1.3A or above.
2. After the trainer lays idle for 4 minutes, the console switches to power save mode. When the console detects pedaling, pulse or key inputs again, the screen illuminates.

PROFILES

NOTE1: PRE-SET PROFILE PROGRAM PROFILES

P1



P6



P2



P7



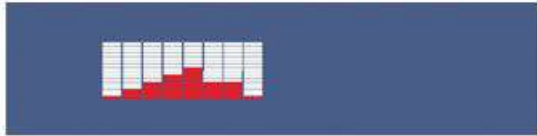
P3



P8



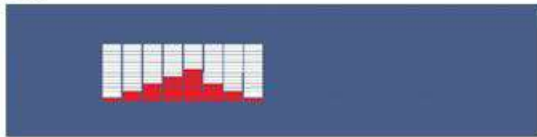
P4



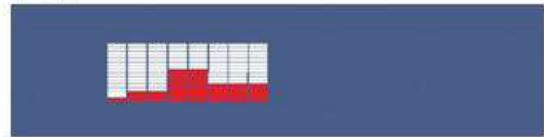
P9



P5



P10



NOTE 2: CALORIE PROGRAM PROFILES

C1(Target 300Cal)



C2(Target 600Cal)



C3(Target 900Cal)



NOTE 3: INTERVAL TRAINING PROGRAM PROFILES

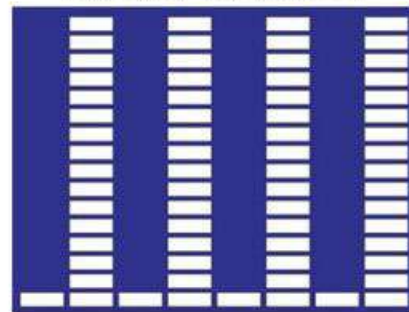
I1 interval time(20/10s)



I2 interval time (30/15s)



I3 interval time(40/20s)



NOTE4: WATT CONTROL PROGRAM PROFILES

W1



W2



W3



CONSOLE TROUBLESHOOTING

DESCRIPTION	SOLUTION
DISPLAY BLACK OUT	<ol style="list-style-type: none"> 1. Check the adapter is properly plugged into the power outlet and the trainer. 2. Check the adapter required voltage is the same as the power outlet. 3. Check the console wire is properly connected to the console. 4. Check the power cable is properly installed.
NO RESISTANCE	<ol style="list-style-type: none"> 1. Check the motor works when you adjust the resistance level. 2. Check the motor wire is properly connected to the console. 3. Re-plug the adapter into the power outlet and the trainer.
NO HAND PULSE DETECTED	<ol style="list-style-type: none"> 1. Slightly apply a few drops of water on both hands and hold the handlebar pulse sensors with both hands. 2. Check the hand pulse wire is properly connected to the console. 3. Make sure the console is not in power saving mode.
NO TELEMETRIC PULSE DETECTED	<ol style="list-style-type: none"> 1. Check the battery of the chest strap. 2. Check the position of the chest strap. 3. Make sure the console is not in power saving mode.
E-2 CODE	Re-plug the adapter into the power outlet.
E-7 CODE	<ol style="list-style-type: none"> 1. Check the wires are properly connected. 2. Re-plug the adapter into the power outlet.
NO SPEED DISPLAY	<ol style="list-style-type: none"> 1. Re-connect the console wire to the console. 2. Check the sensor wire is properly installed as the exploded view shown.
RECOVERY PROGRAM NOT FUNCTIONAL	<ol style="list-style-type: none"> 1. Make sure the console is not in stop mode. 2. The program can only work when the pulse is detected. Wear a chest strap or keep both hands on the handlebars to provide a pulse reading to the console.

WARM UP / COOL DOWN

Suggested Stretches

The following stretches provide a good warm-up and cool-down. Move slowly as you stretch.

Ham String Stretch

Sit with one leg extended. Bring the sole of the opposite foot toward you, resting it against the extended leg's inner thigh. Stretch toward your toe as far as possible, hold for 15 counts, then relax. Repeat three times for both legs. .

Stretches: Hamstring, Lower Back and Groin



Inner Thigh Stretch

Sit with the soles of your feet together and knees pointing outward. Pull your feet as close into the groin area as possible. Hold for 15 counts, then relax. Repeat three times.

Stretches: Quadriceps and Hip Muscles



Toe Touches

Stand with your knees bend slightly, slowly bend forward from the hips. Allow your back and shoulders to relax as you stretch down toward your toes. Go as far as you can and hold for 15 counts, then relax. Repeat three times.

Stretch: Hamstring, Back of Knees, Back



Quadriceps Stretch

Stand on one foot with one hand hold onto the wall to balance, raise the other foot behind you, and pull up your foot as close to your buttocks as possible. Hold for 15 counts, then relax. Repeat three times.

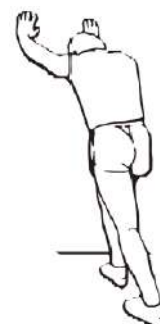
Stretch: Quadriceps muscles, Hip muscle



Calf/Achilles Stretch

With one leg in front of the other and arms out, lean against the wall. Keep your back leg straight and back foot flat on the ground; then bend the front leg and lean forward by moving your hips toward the wall. Hold, then repeat on the other side. To cause even further stretching the Achilles tendons, slightly bend back leg as well.

Stretch: Lower legs, Achilles tendons, and Ankles



CLEANING & MAINTENANCE

Inspect and tighten all parts of the exercise trainer regularly. Replace any worn parts immediately.

To clean the exercise trainer, use damp cloth and a small amount of mild soap. **IMPORTANT: To avoid damage to the console, keep liquids away from the console and keep the console out of direct sunlight.**

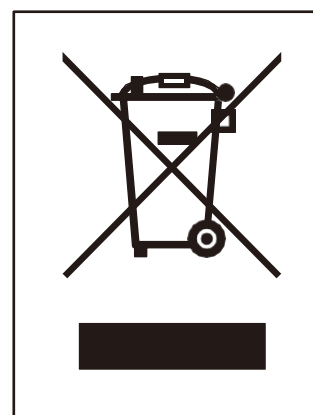
CONSOLE TROUBLESHOOTING

Read console troubleshooting section in the console manual for assistance.

RECYCLING INFORMATION

This electronic product must not be disposed of in municipal waste. To pre-serve the environment, this product must be recycled after its useful life as required by law.

Please use recycling facilities that are authorized to collect this type of waste in your area. In doing so, you will help to conserve natural resources and improve European standards of environmental protection. If you require more information about safe and correct disposal methods, please contact your local city office or the establishment where you purchased this product.



ADDITIONAL INFORMATION

1. The console requires 9V, 1.3A adaptor.
2. After 4 minutes of non use the console enters into power save mode, all setting and exercise data are stored until a user starts the trainer again.

TERMS OF WARRANTY

General Exclusions:

- Causing damage to the finish of any part of the machine.
- Damage due to negligence, misuse, incorrect assembly or use of the machine. Any damage or loss in transit of any kind.
- When the damage is the result of misuse, conversions, poor connection, poor maintenance.
- Parts that have been damaged by user's fault such as broken plastic parts, worn belt due to incorrect adjustment, incorrect or insufficient lubrication, damages during the movement of the machine.
- Accessories such as side steps, cushion protectors and straps are considered consumables and are covered by a 6-month warranty.
- When the machine is opened or repaired by third parties.
- When the machine is placed outdoors or exposed to the sun, rain, or dust.
- When damage has been caused to electronic components (console) due to intense sweating or other liquid substance that has come into contact or penetrated inside them.

General terms:

- X-Treme Stores reserves the right to examine any part where replacement is requested under warranty.
- The warranty period applies only to the original purchaser from the date of purchase and is not transferable.
- X-Treme Stores makes no warranty other than that stated herein and expressly disclaims all warranties not stated in this warranty. X-Treme Stores is not responsible for incidental or consequential damages.
- The warranty starts automatically when the product is sold.

Tel.: 210 66 20 921 -2 – **Fax:** 210 66 20 923 – **e-mail:** service@xtr.gr



34 koupi Avenue, Koropi

P.C.:19441 - P.O. Box 6201

Tel.: 210 66 20 921 -2 - **Fax:** 210 66 20 923

E-mail: info@xtr.gr • [f/xtrstores](https://www.facebook.com/xtrstores) •  [@xtr.gr](https://www.instagram.com/xtr.gr)

Tel. for all of Greece:

801.11.15.100

www.xtr.gr